

# COOPI IN CENTRAL AFRICAN REPUBLIC



## EVOLUTION OF COOPI PRESENCE IN THE COUNTRY

COOPI has been **continuously** present in the Central African Republic since **1974** and has remained in the country even during the most difficult times, building strong ties with local communities year after year.

Initially, COOPI operated in the **north of the country** mainly by implementing **integrated community development projects** that could synergistically promote **agricultural development**, health and **education**.

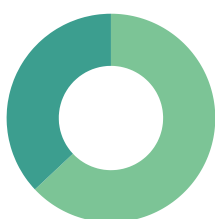
In the mid-1980s, COOPI also began operating in the south of the country, notably in the prefectures of Lobaye and Ombella-Poko, as well as in Bangui. In the capital, COOPI carried out a number of projects to develop **the informal economy** and, in collaboration with the city's archbishopric, created the country's first **assistance center for the disabled: the CRHAM Center**.

Since the mid-1990s, as the country's social situation has worsened, COOPI has also taken steps to respond more effectively to **humanitarian emergencies**.

### FROM 1974 TO 2022 :

**245**  
PROJECTS

**37%**  
DEVELOPMENT



**63%**  
EMERGENCY

**8 796 232**  
BENEFICIARIES

### SECTORS IN WHICH COOPI HAS OPERATED IN THE COUNTRY



FOOD SECURITY AND LIVELIHOODS



EDUCATION IN EMERGENCY SITUATIONS



FORMATION



HEALTH



WATER, HYGIENE AND SANITATION WASH



NUTRITIONAL SAFETY



ECONOMIC DEVELOPMENT



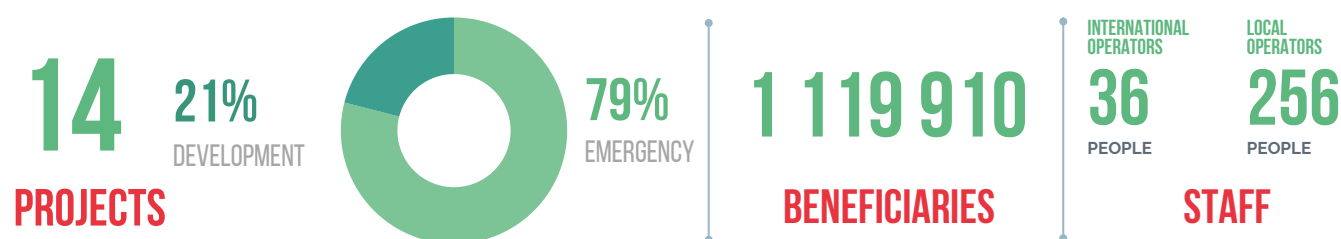
GOVERNANCE/CIVIL SOCIETY/HUMAN RIGHTS



MIGRATION

## COOPI TODAY IN CENTRAL AFRICAN REPUBLIC

Today, COOPI in the Central African Republic implements both emergency and development projects, in cooperation with numerous institutions and organizations operating in the country, while encouraging the **transition from emergency** to the promotion of **sustainable development** wherever possible. At present, the sectors in which COOPI is involved in the Central African Republic are, above all, the promotion of Food Security, Protection and Education in emergency situations, support for migrants and refugees, and Water, Hygiene and Sanitation.



### SECTORS IN WHICH COOPI OPERATES IN THE COUNTRY



COOPI is currently present in the Central African Republic in 7 prefectures with 8 operational bases located in Bangui (COOPI CAR Office), Alindao, Bambari, Bangassou, Batangafo, Bria, Obo and Zemio.



## MAIN SECTORS OF INTERVENTION



### FOOD SAFETY

COOPI has been promoting food security in CAR for almost forty years, since it began operating in the country in 1974. In this area, COOPI carries out integrated development programs on an ongoing basis:

- FOOD DISTRIBUTION ;
- START-UP AND RELAUNCH OF AGRO-PASTORAL ACTIVITIES;
- IMPROVING STORAGE CAPACITY FOR AGRICULTURAL AND LIVESTOCK EQUIPMENT;
- SUPPORT FOR SMALL ENTREPRENEURS, RETURNING MIGRANTS AND YOUNG PEOPLE AT RISK OF MIGRATION.

2023:  
**4**  
PROJETS  
**670 011**  
DE BÉNÉFICIAIRES

**COOPI ADOPTS AN INTEGRATED APPROACH TO PROMOTE FOOD SECURITY.**

**FIND OUT MORE ABOUT : FOOD SAFETY POLICY**  
**[WWW.COOPI.ORG/POLICY-SECALIMENTAIRE](http://WWW.COOPI.ORG/POLICY-SECALIMENTAIRE)**



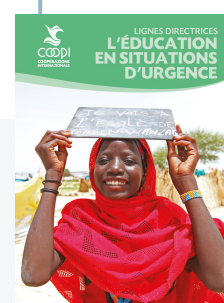
### ÉDUCATION IN EMERGENCY

COOPI has been promoting education in emergency situations in the CAR for more than 10 years, providing infrastructure, support and training:

- CONSTRUCTION AND REHABILITATION OF SCHOOL INFRASTRUCTURES USING SEMI-PERMANENT MATERIALS;
- CONSTRUCTION OF "LIGHT" TEMPORARY STRUCTURES IN THE ABSENCE OF FIXED STRUCTURES;
- EQUIPPING CLASSROOMS AND SUPPLYING SCHOOL MATERIALS;
- PSYCHOSOCIAL SUPPORT;
- TRAINING TEACHERS AND PARENTS TO BECOME SCHOOL EDUCATORS.

2023:  
**3**  
PROJECTS  
**50 856**  
BENEFICIARIES

**FIND OUT MORE ABOUT OUR APPROACH AND APPLIED METHODOLOGIES:**  
**EMERGENCY EDUCATION POLICY**  
**[WWW.COOPI.ORG/POLICY-EDUCATIONENURGENGE](http://WWW.COOPI.ORG/POLICY-EDUCATIONENURGENGE)**





## MAIN SECTORS OF INTERVENTION



### PROTECTION

COOPI began carrying out protection activities in CAR in the 1990s, with a particular focus on children and women. The main protection activities carried out by COOPI in CAR are as follows:

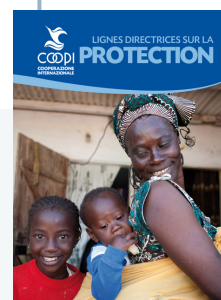
- PREVENTION OF SEXUAL VIOLENCE ;
- REINTEGRATION OF WOMEN SURVIVORS OF VIOLENCE ;
- CARE AND REINTEGRATION OF UNACCOMPANIED MINORS AND MINORS FORMERLY ASSOCIATED WITH ARMED GROUPS;
- PROMOTION OF MENTAL HEALTH THROUGH LISTENING CENTERS AND PSYCHOLOGICAL SUPPORT AT COMMUNITY AND INDIVIDUAL LEVEL;
- CONSTRUCTION OF SHELTERS AND MANAGEMENT OF SITES FOR DISPLACED PERSONS;
- TRAINING IN INCOME-GENERATING ACTIVITIES.

2023:  
**1**  
PROJET  
**42.083**  
DE BÉNÉFICIAIRES

FIND OUT MORE ABOUT OUR APPROACH AND APPLIED METHODOLOGIES:

**PROTECTION POLICY**

**[WWW.COOPI.ORG/POLICY-PROTECTION](http://WWW.COOPI.ORG/POLICY-PROTECTION)**



## COOPI'S NETWORK IN CENTRAL AFRICAN REPUBLIC

### CLUSTERS IN WHICH COOPI PARTICIPATES IN THE RCA

Food Security Cluster - Protection Cluster: Sous-cluster Child Protection and Monitoring and Reporting Mechanism (MRM) Working Group - Sous-cluster Violences Basées sur le Genre (VBG) - Education Cluster - Cash Cluster - Camp Coordination and Camp Manager (CCCM) Cluster - Solution Durable Working Group

### RCA INSTITUTIONS WITH WHICH COOPI COLLABORATES

Agence Centrafricaine de Développement Agricole (ACDA) • Agence National de Développement de l'Élevage (ANDE) • Agence Nationale de l'Eau et de l'Assainissement (ANEA) • Association Nationale des Éleveurs de Porc (ANEP) • Agence Nationale des Groupements des Aviculteurs de Centrafrique (ANGAC) • Conférence Panafricaine Coopérative (CPC) • Fédération Nationale des Éleveurs Centrafricains (FNEC) • Ministère de l'Agriculture et de l'Élevage • Ministère de la Jeunesse et du Sport • Ministère de l'Économie, du Plan et de la Coopération Internationale.

### COOPI'S NATIONAL AND LOCAL PARTNERS

URU

### COOPI'S INTERNATIONAL PARTNERS

ACTED • OXFAM Intermón (Spain) • DRC • Concern Worldwide

## COOPI'S FUNDERS IN RCA

### CURRENTLY, COOPI'S ACTIVITIES IN CAR ARE FUNDED BY: :



Protection civile  
et aide humanitaire  
de l'Union européenne



Union européenne



CAR  
Humanitarian  
Fund

unicef   
for every child



Organisation des Nations Unies  
pour l'alimentation et l'agriculture

## COOPI'S DEVELOPMENT PRIORITIES IN THE CENTRAL AFRICAN REPUBLIC

In the Central African Republic, COOPI's priority sectors of intervention in the near future will include activities such as :

- **child protection** and care for victims of gender-based violence;
- **socio-economic reintegration** of vulnerable groups ;
- **education in emergency** situations ;
- food security, with a focus on agricultural development interventions, as well as in emergency situations through direct food distribution and/or cash transfer mechanisms;
- **management of sites** for displaced persons and refugees, as well as distribution of non-food items (NFI) in emergency situations;
- **nutrition**, a sector in which activities will also be developed following completion of the WFP/UNICEF pilot project, by implementing the Simplified Protocol for Integrated Management of Acute Malnutrition..

**Environmental protection** is also one of the sectors COOPI plans to develop in the coming years.



FIND OUT MORE ABOUT COOPI'S PROJECTS IN CAR

[WWW.COOPI.ORG/RCA](http://WWW.COOPI.ORG/RCA)



COOPI - RÉPUBLIQUE CENTRAFRICAINE  
SICA 1, QUARTIERE SISSONGO, BP 1335 - BANGUI



[CM.RCA@COOPI.ORG](mailto:CM.RCA@COOPI.ORG)



COOPI - COOPERAZIONE INTERNAZIONALE  
VIA F. DE LEMENE 50 - 20151 MILAN - ITALIE



[COOPI@COOPI.ORG](mailto:COOPI@COOPI.ORG)