



COOPI PRESENCE IN THE COUNTRY

Mali is experiencing one of the worst multi-dimensional crises in the Sahel, which began in 2012, the northern regions and then spread to the centre of the country through conflict, leading to massive displacement of the population, abandoning their fields, livestock and other possessions.

Since 2013, COOPI has been working in the **Ségou and Mopti regions**, which have some of the highest levels of child malnutrition in the Sahel. Here, human rights violations are alarming, particularly against children, who are often recruited by armed groups. Despite the various interventions carried out by COOPI in these regions, which have saved lives, humanitarian needs continue to exist.

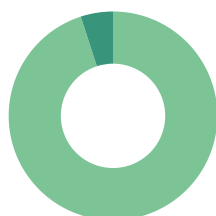
In 2022, the conflict in Ukraine and the blocking of cereal imports further exacerbated the food crisis in the country. In response to the deep food crisis and humanitarian emergency in these regions, COOPI is involved in several areas of intervention, promoting the fight against malnutrition, supporting health centres, improving access to medical care, protecting children against violations of their rights and offering psychosocial support to victims of abuse and violence.

In 2022, COOPI included the district of Bamako in its activities, with interventions in entrepreneurship for young people and women.

FROM 2013 TO 2024 :

56
PROJECTS

5%
DEVELOPMENT



95%
EMERGENCY

6,032,908
DIRECT
BENEFICIARIES

SECTORS IN WHICH COOPI OPERATED IN THE COUNTRY



HEALTH



NUTRITIONAL
SECURITY



FOOD
SECURITY AND
LIVELIHOODS



ECONOMIC
DEVELOPMENT E



PROTECTION



WASH



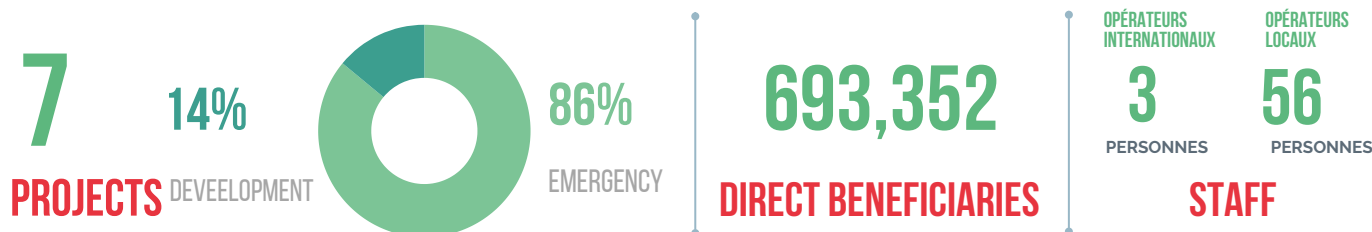
MIGRATION

COOPI IN MALI TODAY

Humanitarian crisis **rapid response** mechanisms, **protection**, **health and mental health**, and malnutrition countering are the main strands of COOPI's intervention in Mali.

Here COOPI ensures **access to health and nutrition services** and provides psychosocial support to displaced people, refugees, migrants, and host communities with a special focus on the most vulnerable: pregnant and lactating women, children, the disabled, and the elderly.

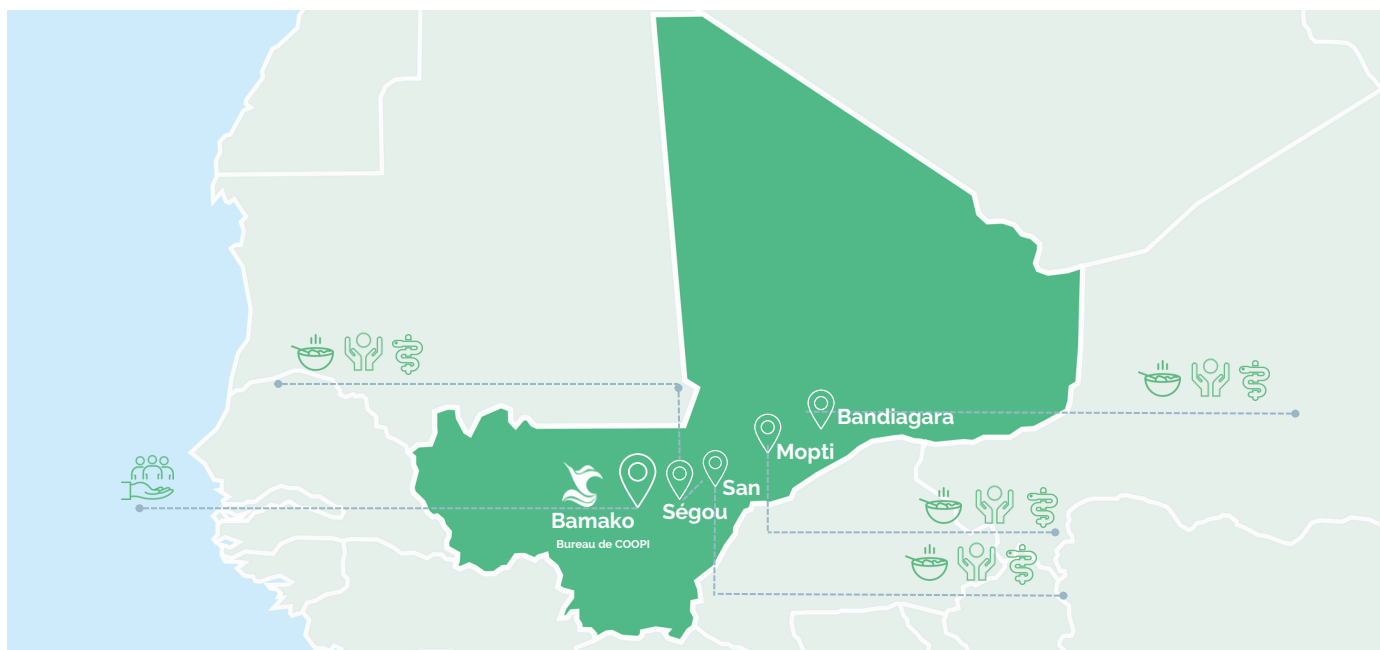
COOPI works in Mali alongside government institutions to ensure a response to the growing needs related to the context of vulnerability. The commitment of local and national staff has grown over the years to address the country's difficulties.



SECTORS IN WHICH COOPI OPERATES IN THE COUNTRY



COOPI is currently present in Mali in the regions of Bandiagara, Douentza, Mopti, San and Ségou with 2 offices/operational bases and 4 sub-bases/field office. COOPI's Mali office is located in Bamako.



MAIN AREAS OF INTERVENTION

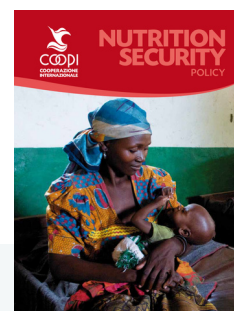


NUTRITIONAL SECURITY

In response to the food crisis that has been affecting the country for years and the urgent needs of the most vulnerable populations, COOPI is promoting nutritional security in Mali by intervening on multiple fronts:

- ACCESS TO FREE MEDICAL AND NUTRITIONAL CARE AT HEALTH CENTERS AND MULTIPURPOSE MOBILE TEAMS;
- AWARENESS CAMPAIGNS ON GOOD PRACTICES IN BREASTFEEDING, INFANT AND YOUNG CHILD FEEDING , FOOD DIVERSIFICATION TECHNIQUES;
- NEWBORN SCREENING FOR MALNUTRITION AND TRAINING ON BRACHIAL PERIMETER MEASUREMENT;
- DISTRIBUTION OF MEDICAL EQUIPMENT AT HEALTH CENTERS;
- TRAINING OF COMMUNITY ACTORS AND HEALTH STAFF IN MANAGEMENT, ADMINISTRATIVE AND FINANCIAL SKILLS;
- SENSITIZATION OF MOTHERS, COMMUNITY ACTORS AND COMMUNITY RELAY STAFF ON PREVENTION OF SPREAD, CONTROL AND MANAGEMENT OF COVID-19 INFECTIONS.

2024:
1
 PROJECT
74,695
 BENEFICIARIES



LEARN MORE ABOUT: **NUTRITION AND SECURITY POLICY**
WWW.COOPI.ORG/UPLOADS/HOME/15A7305BFCC3B5.PDF



MAIN AREAS OF INTERVENTION



HEALTH AND MENTAL HEALTH

Since 2012, Mali has been facing a profound humanitarian crisis, with the adverse effects of climate change. To meet the urgent health needs of the most vulnerable populations, COOPI is providing health care at several levels:

- SUPPORT FOR HEALTH CENTERS THROUGH MULTI-PURPOSE MOBILE TEAMS;
- AWARENESS CAMPAIGNS ON ANTENATAL CARE, OBSTETRIC AND NEONATAL CARE, VACCINATIONS, HIV, TUBERCULOSIS (TB), AND MALARIA;
- HIV AND TB SCREENING WITH FREE TREATMENT SERVICES;
- DISTRIBUTION OF MEDICAL EQUIPMENT TO HEALTH CENTERS;
- IMPLEMENTATION OF THE HEALTH SURGE APPROACH IN HEALTHCARE FACILITIES;
- SUPPORT FOR STRATEGIES AIMED AT IMPROVING IMMUNIZATION COVERAGE;
- MANAGEMENT OF OBSTETRIC AND NEONATAL EMERGENCIES;
- TRAINING FOR HEALTHCARE WORKERS AND COMMUNITY STAKEHOLDERS ON MENTAL HEALTH AND PSYCHOSOCIAL SUPPORT.

2024:
3
 PROJETS
542,120
 BENEFICIARIES



MAIN AREAS OF INTERVENTION



PROTECTION

The number of migrants and displaced persons in Mali has increased significantly in recent years, and with that, the number of unaccompanied or separated minors at risk of being recruited by armed groups. COOPI promotes protection interventions in the country targeting migrants and displaced persons and host communities with a focus on the protection of minors. COOPI serves as a point of reference in the response to and prevention of violations of children's rights, helping to strengthen Malian community child protection mechanisms by adopting a participatory and gender-sensitive approach.

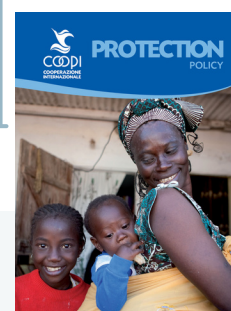
COOPI promotes Protection activities in Mali on multiple levels:

- TEMPORARY ASSISTANCE SERVICES, ACCOMPANIMENT FOR FAMILY REUNIFICATION AND REINTEGRATION SOLUTIONS IN COMMUNITIES OF ORIGIN FOR VULNERABLE AND/OR UNACCOMPANIED CHILDREN AND MINORS;
- MONITORING, VERIFICATION AND DOCUMENTATION OF SERIOUS VIOLATIONS OF CHILDREN'S RIGHTS COMMITTED BY ARMED GROUPS;
- RECREATIONAL AND PSYCHOSOCIAL ACTIVITIES AT THE LOCAL LEVEL;
- CAPACITY BUILDING OF LOCAL AUTHORITIES;
- SUPPORT IN THE MANAGEMENT OF TRANSIT CENTERS FOR MIGRANTS AND UNACCOMPANIED MINORS;
- PROMOTION OF MENTAL HEALTH AT THE COMMUNITY AND INDIVIDUAL LEVEL ("CASE MANAGEMENT"), WITH AWARENESS-RAISING AND TRAINING OF HEALTH PROFESSIONALS, COMMUNITY FOCAL POINTS AND ADVOCACY WITH INSTITUTIONS;
- MONITORING OF VIOLENCE AND GROSS VIOLATIONS OF CHILDREN'S RIGHTS.

2024:
1
 PROJECT
34,525
 BENEFICIARIES

LEARN MORE ABOUT: **PROTECTION POLICY**

WWW.COOPI.ORG/UPLOADS/HOME/15A7302DD14D77.PDF



NETWORK IN MALI

CLUSTER AND FORUM IN WHICH COOPI PARTICIPATES

Nutritional security (co-lead in the Bandiagara region) - Child protection and welfare - Health - Food security - Operational framework for mental health - GBV working group - GTAH (Humanitarian Action Working Group) - FONGIM (Mali INGO Forum), MEAL working group.

INSTITUTIONS WITH WHICH COOPI COOPERATES

Association of Community Health (ASACO) - Local Child Protection Committees (CLPE) - Regional Directorate of the Ministry of Promotion of Women, Children and Families (DRPFEF) - Regional Directorate of Health (DRS) - Djenné Health District - Municipalities

NATIONAL AND LOCAL COOPI PARTNERS

AMSODE • ARCADE Santé PLUS

COOPI INTERNATIONAL PARTNERS

CRS • LVIA • Mercy Corps • TAMAT • TdH Svizzera • VIS

COOPI INSTITUTIONAL DONORS

COOPI ACTIVITIES IN MALI ARE CURRENTLY FUNDED BY:



COOPI DEVELOPMENT LINES IN MALI

COOPI's priority areas of intervention in the near future in Mali will remain:

- **Protection**, by strengthening assistance to women victims of gender-based violence and unaccompanied minors who are victims of abuse and armed conflict, while promoting awareness-raising, training and capacity-building activities. Strengthening childcare, family reunification and socio-economic, educational and socio-professional reintegration through transition and guidance centres and foster families;
- **Nutrition**, by consolidating community health centres and activities to prevent and treat malnutrition;
- **Health**, by maintaining access to primary care for newly displaced people;
- **Mental health** and psychosocial support, by strengthening communities' knowledge of self-management, level 1 management of the IASC mental health pyramid and referral to higher levels, with an emphasis on social cohesion and combating the stigmatisation of mental illness and psychosocial disorders. It will also build the capacity of health workers to provide level 2 ECPs in mental health and psychosocial support.
- **Youth and women's entrepreneurship**: by supporting young entrepreneurs (unemployed graduates, returning migrants) and women's groups through training and the provision of start-up kits and coaching.
- **Water Hygiene Sanitation**: through ATPC, Wash in schools, social intermediation around water points and Wash in health care settings.



READ MORE ABOUT COOPI'S PROJECTS IN MALI

WWW.COOPI.ORG/EN/PAESE/MALI.HTML



COOPI - MALI
SOTUBA ACI, LOT NA/2598 - BAMAKO



CM.MALI@COOPI.ORG



COOPI - COOPERAZIONE INTERNAZIONALE
VIA F. DE LEMENE 50 - 20151 MILANO - ITALIA



COOPI@COOPI.ORG