



## COOPI PRESENCE IN THE COUNTRY

Since 2004, COOPI has been present in Sudan, implementing interventions in favour of the most vulnerable peoples, afflicted by **conflicts** and **natural hazards** by providing humanitarian assistance and building the resilience of individuals, communities and institutions. At first, COOPI operated in North Darfur; while later on, **in 2019**, it expanded its presence to **eastern Sudan** - Kassala and Gedaref - and the capital **Khartoum**.

Over the years, COOPI adopted a multi-sectoral and integrated approach, which led to a considerable improvement of their lives and access to basic services with programmes dedicated to **Shelter and Non-Food Items, Food Security and Livelihoods, WASH and Disaster Risk Reduction** in the states of North Darfur, Kassala, Khartoum, Gedaref, Northern State e River Nile. Since 2023, COOPI has started developing protection and multi-purpose cash activities in all the areas of operations.

Following the outbreak of the civil war in April 2023, COOPI is actively engaged in the humanitarian **emergency response** to the population affected by the conflict by reinforcing its humanitarian presence and scaling up the operations.

### FROM 2004 TO 2025:

**118**  
PROJECTS

**13%**  
DEVELOPMENT



**87%**  
EMERGENCY

**3,965,825**  
DIRECT BENEFICIARIES

### AREAS IN WHICH COOPI HAS WORKED IN THE COUNTRY



FOOD SECURITY AND LIVELIHOODS



HUMANITARIAN ASSISTANCE



NUTRITIONAL SECURITY



WASH



PROTECTION



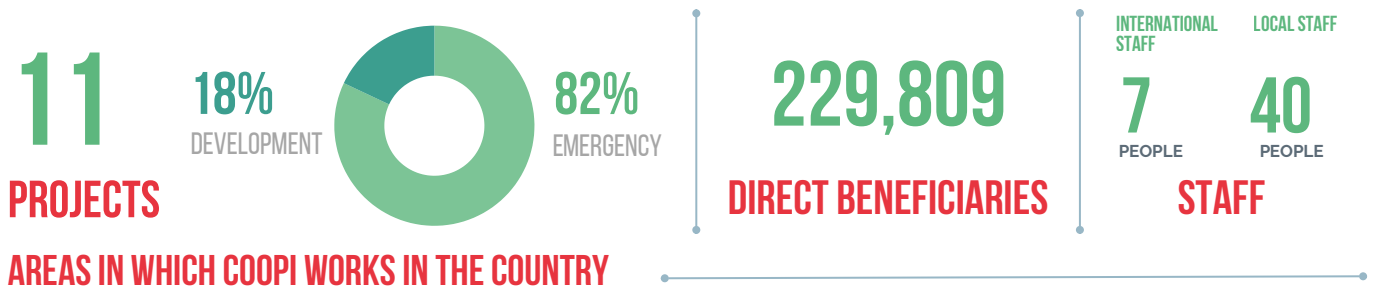
DISASTER RISK REDUCTION (DDR) / DISASTER PREPAREDNESS (DP)



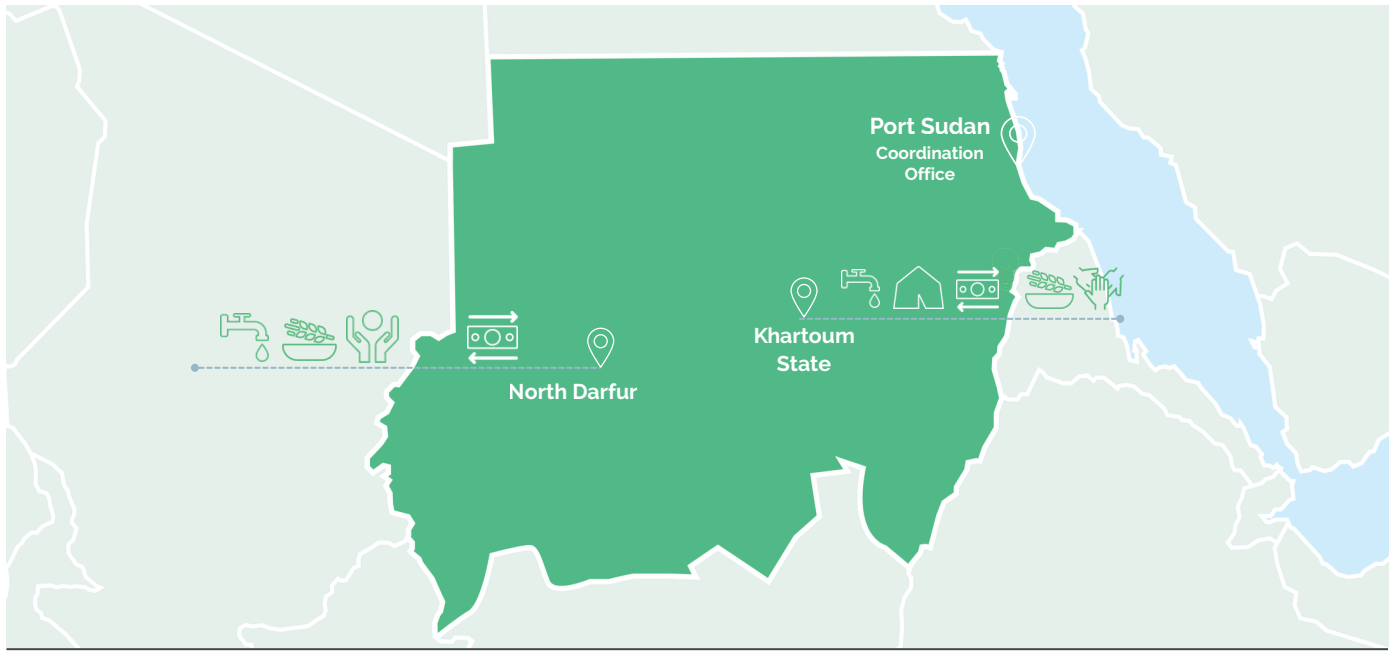
ECONOMIC DEVELOPMENT

## COOPI IN SUDAN TODAY

The outbreak of the **civil war** in Sudan led to a restructuring of COOPI's interventions in the country and expanded its geographical presence. The large number of displaced persons caused by the civil war makes **Sudan the worst displacement crises in the world** with approximately 12.7 million of IDPs and 4 million of refugees abroad. Sudan is also facing the **most severe hunger crisis in the world**: nearly 25 million people are experiencing acute food insecurity, with close to 9 million in emergency and catastrophic levels of hunger. COOPI activated a rapid emergency response, providing **humanitarian assistance to displaced persons** mainly through interventions in the WASH, non-food items (NFIs), Food Security and Livelihoods (FSL) support, Disaster Risk Reduction (DRR) and protection sectors. Key activities included the provision of safe drinking water, immediate access to food and shelter, as well as support to households for the rehabilitation of livelihood-related infrastructure.



COOPI has reorganised its operational presence in the country in response to the evolving context. It currently maintains a field office in Khartoum, providing humanitarian assistance in the capital. COOPI has also consolidated its presence in North Darfur, where it operates through three operational bases located in Mellit, Tawila and El Fasher. COOPI's presence in the country continues to adapt to the evolution of the conflict.



## MAIN AREAS OF INTERVENTION



### HUMANITARIAN ASSISTANCE AND PROTECTION

COOPI adopts a multi-sectoral approach to humanitarian assistance and implements integrated protection interventions. These are designed to strengthen the safety, dignity and resilience of populations affected by conflict, in particular internally displaced persons, returnees, women, children and other vulnerable groups exposed to high protection risks.

In this context, COOPI supports the establishment and strengthening of community-level Protection Committees and local networks of volunteers to enhance community-level capacities for identification, reporting and response. Interventions are implemented through conflict-sensitive and survivor-centred approaches, ensuring safe reporting and coordination with specialist service providers, local authorities and humanitarian protection actors. In all its activities, COOPI integrates protection, gender, age, the inclusion of people with disabilities and accountability towards affected populations to ensure equitable and safe access to services for the most vulnerable communities.

THE MAIN ACTIVITIES ARE:

- PSYCHOSOCIAL SUPPORT;
- CASE IDENTIFICATION AND MANAGEMENT;
- CASH ASSISTANCE FOR PROTECTION;
- DISTRIBUTION OF DIGNITY KITS;
- AWARENESS-RAISING ACTIVITIES ON CHILD PROTECTION, GENDER-BASED VIOLENCE (GBV), AND THE PREVENTION OF SEXUAL EXPLOITATION AND ABUSE (PSEA).

2026:

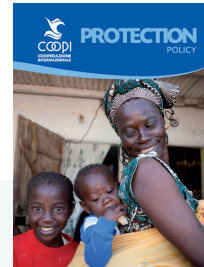
**5**  
PROJECTS

**103,723**  
BENEFICIARIES

LEARN MORE ABOUT THE APPROACH AND METHODOLOGIES APPLIED

**PROTECTION POLICY**

[WWW.COOPI.ORG/PROTECTION-POLICY](http://WWW.COOPI.ORG/PROTECTION-POLICY)



# MAIN AREAS OF INTERVENTION



## WASH

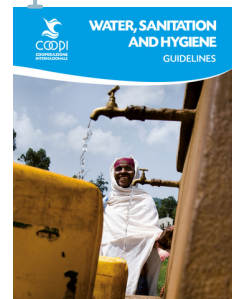
COOPI employs a **systems-based approach to WASH**, integrating infrastructure rehabilitation, behavioral change communication, and emergency response mechanisms. Interventions focus on increasing water supply access through borehole rehabilitation, solarized water systems, and water trucking in acute emergencies. Complementary actions include sanitation infrastructure upgrading, community-led hygiene promotion, and emergency preparedness for cholera and waterborne diseases. COOPI's WASH programming is designed to mitigate public health risks in displacement settings while ensuring linkages with nutrition and food security initiatives.

- EMERGENCY AND SUSTAINABLE WASH SOLUTIONS IN HARD TO REACH AREAS FOR DISPLACED PERSONS;
- PROVISION OF WATER SUPPLY THROUGH WATER TRUCKING;
- REHABILITATION AND PROTECTION OF EXISTING COMMUNAL STRATEGIC WATER SOURCES;
- TRAINING OF COMMUNITY COMMITTEES ON OPERATION AND MAINTENANCE, TARGETING DRAUGHT-AFFECTED COMMUNITIES;
- CONSTRUCTION OF NEW COMMUNAL FLOOD- RESISTANT WELLS, DAMS, HAFIRS AND EMERGENCY LATRINES;
- IMPLEMENTATION OF WASTE MANAGEMENT CAMPAIGNS;
- GOOD HYGIENE PRACTICES TRAINING, AS A WAY TO PREVENT POSSIBLE EPIDEMICS;
- WATER QUALITY MONITORING AND CHLORINATION.

2026:

**4**  
PROJECTS

**60,884**  
BENEFICIARIES



LEARN MORE ABOUT THE APPROACH AND METHODOLOGIES APPLIED

**WATER AND HYGIENE GUIDELINES**

[WWW.COOPI.ORG/WASH-POLICY](http://WWW.COOPI.ORG/WASH-POLICY)



# MAIN AREAS OF INTERVENTION

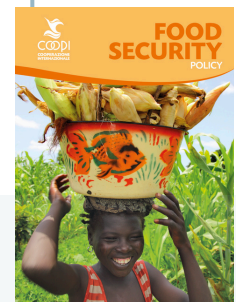


## FOOD SECURITY AND LIVELIHOODS

COOPI's FSL strategy is centered on resilience-building through climate-smart agriculture, livelihood diversification, and market-based approaches. Programming includes agro-ecological interventions, smallholder productivity enhancement, and value chain development, supported by climate adaptation strategies such as drought-resistant cropping and sustainable land management. Cash-based interventions are deployed in both emergency and early recovery contexts, ensuring improved food access while stimulating local markets. COOPI applies a household economic security framework, analyzing income sources, expenditure patterns, and coping mechanisms to tailor responses. The main activities that COOPI carries out in this area are:

- IMPROVING IMMEDIATE ACCESS TO FOOD THROUGH FOOD VOUCHERS FOR POPULATION IN IPC 3 AND 4;
- TRAINING ON INFANT AND YOUNG FEEDING PRACTICES (IYCF), HYGIENE, AND SANITATION;
- SUPPORT THROUGH CASH FOR WORK, AGRICULTURAL INPUTS, LIVESTOCK TREATMENT;
- ASSIST IN LIVELIHOODS RECOVERY AND RESILIENCE BUILDING;
- COMMUNITY BASED LIVESTOCK PROTECTION MECHANISM;
- ENHANCE FODDER PRODUCTION THROUGH INPUTS SUPPORT AND TRAINING AS WELL AS HARVESTING STRUCTURE CONSTRUCTION;
- INCOME GENERATING ACTIVITIES, TRAININGS, PROVISION OF BUSINESS GRANTS, MARKET ASSESSMENT.

2026:  
**2**  
 PROJECTS  
**49,430**  
 BENEFICIARIES



**COOPI ADOPTS AN INTEGRATED APPROACH TO PROMOTE FOOD SECURITY**

**READ MORE ABOUT: FOOD SECURITY POLICY**

[WWW.COOPI.ORG/FOODSEC-POLICY](http://WWW.COOPI.ORG/FOODSEC-POLICY)



## NETWORK IN SUDAN

### CLUSTERS IN WHICH COOPI PARTICIPATES

WASH • Shelter/NFI • FSL Cluster • Logistics Cluster • Protection Cluster • Cash working group • PSEA network • Inter-Agency Network

### NATIONAL AND LOCAL COOPI PARTNERS

SAHARI Organization for Development • ANHAR for Peace, Development and Humanitarian Work Organization

### INTERNATIONAL COOPI PARTNERS

GOAL • Save the Children

## COOPI INSTITUTIONAL DONORS

### COOPI ACTIVITIES IN SUDAN ARE FUNDED BY



## COOPI DEVELOPMENT LINES IN SUDAN

Considering the dramatic humanitarian trends of the country and the complex operational environments, the priority of the organization for 2025 is to reinforce a multi-sectoral emergency response by adopting an integrated approach and reinforcing the internal capacity to respond rapidly to new emergencies, even in hard-to-reach areas, with the aim of leaving no one behind.

In 2026, COOPI integrates resilience-oriented interventions into its planning, particularly in Khartoum, with the objective of strengthening the sustainability of its actions and promoting a nexus approach.

COOPI will intensify its localization agenda, by increasing partnerships with local actors, which are strategically important to reach areas where access is limited due to security reasons and the coordination with the humanitarian community operating in the country.

In terms of geographical distribution, COOPI intends to consolidate and expand its presence in North Darfur and Khartoum State.

COOPI continues to reinforce the coordination with the humanitarian actors in the country in order to foster synergies and enhance the effectiveness of its interventions.



READ MORE ABOUT COOPI PROJECTS IN SUDAN

[WWW.COOPI.ORG/SUDAN](http://WWW.COOPI.ORG/SUDAN)



COOPI - SUDAN  
HAI MATAR, BLOCK 01  
PORT SUDAN



HOM.SUDAN@COOPI.ORG



COOPI - COOPERAZIONE INTERNAZIONALE  
VIA F. DE LEMENE 50 - 20151 MILAN - ITALY



COOPI@COOPI.ORG